

Thursday 10th 1895
 Meanders of John Hopkins, 20. year claim
 at mouth of Cedar Canyon

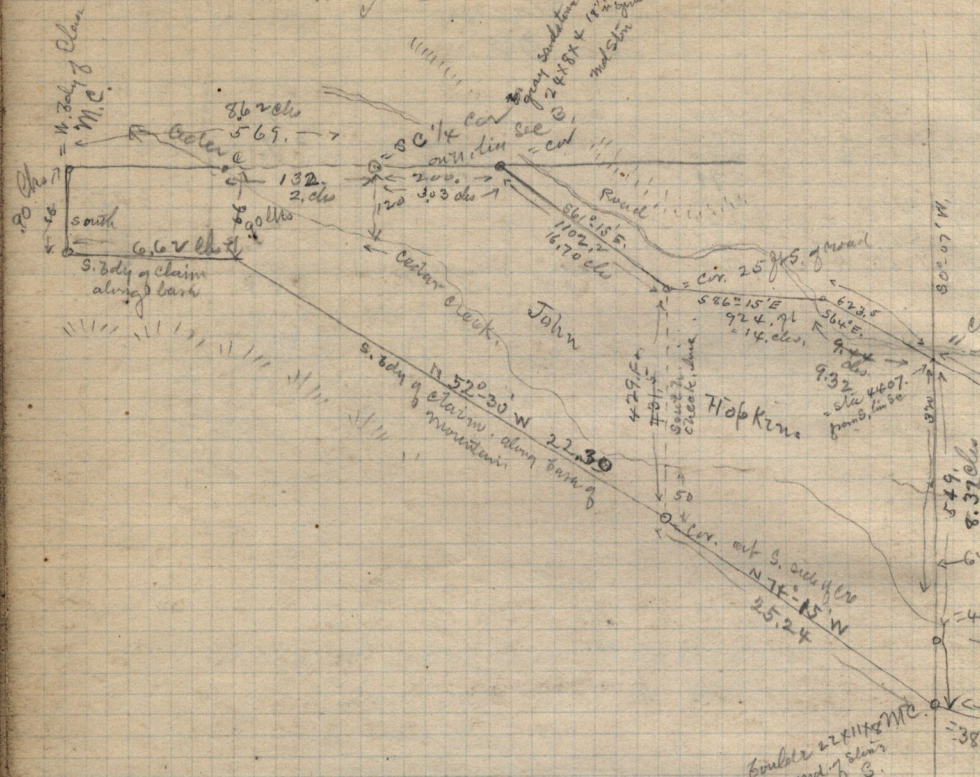


Table of Latitudes & Departures of
 John Hopkins Claim at mouth of Cedar

	N	S	E	W
E 76.9.	769.			
S 61° 15' E	1102.2	530.	966.	
S 81° 15' E	924.	60.	922.	
S 64° 00' E	623.5	273.	560.	

Double 2211/2 ME
 mid of claim
 B.